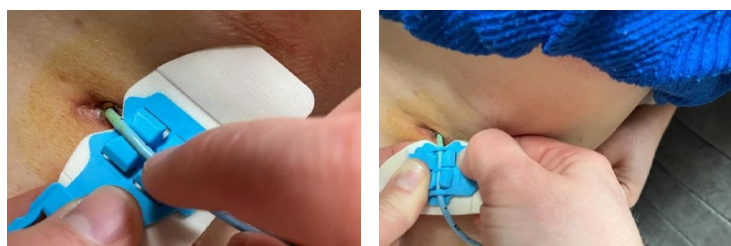
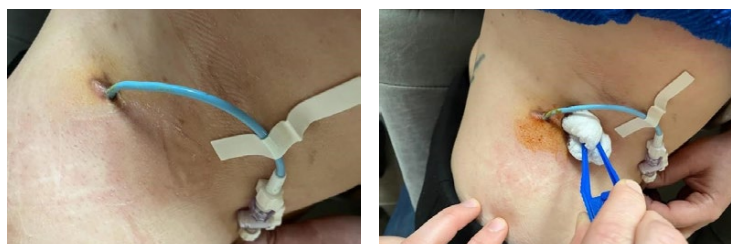


bedal[®] flex

catheter cushion and **stabilization device**



PROCEDURE REPLACING A BEDAL FLEX WITH A NON-SUTURED NEPHROSTOMY CATHETER

- Starting position lying sideways, removal bandage
- Open fixation device + take out catheter, attach catheter with adhesive strip

- Inspect entry point of catheter & surrounding skin
- Disinfect skin with Isobetadine Dermicum and let dry properly

- Place the Bedal Flex as close as possible to the catheter entry point and push the catheter between the 4 air pillows
- Close the fixation device so that the 4 air pillows cover the catheter. Place your left thumb on the blue part of the device, press firmly
- With your right hand close the clip like a shirt button

- Carefully remove the release liner from the bottom of the Bedal Flex and fixate on the skin
- Remove the side release liners when fixation device is properly placed

- Make sure the tape is attached properly to the skin

- Cover the Bedal Flex with 2 sterile compresses to cover the entire catheter
- Cover with transparent dressing
- End result: Replace the covering bandages every 48h for inspection of catheter entry point, replace the Bedal Flex every 7 days

instruction video



bedal

Find out more on www.flex-grip.com